

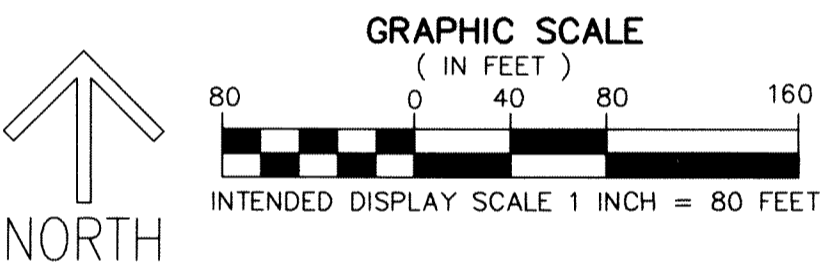
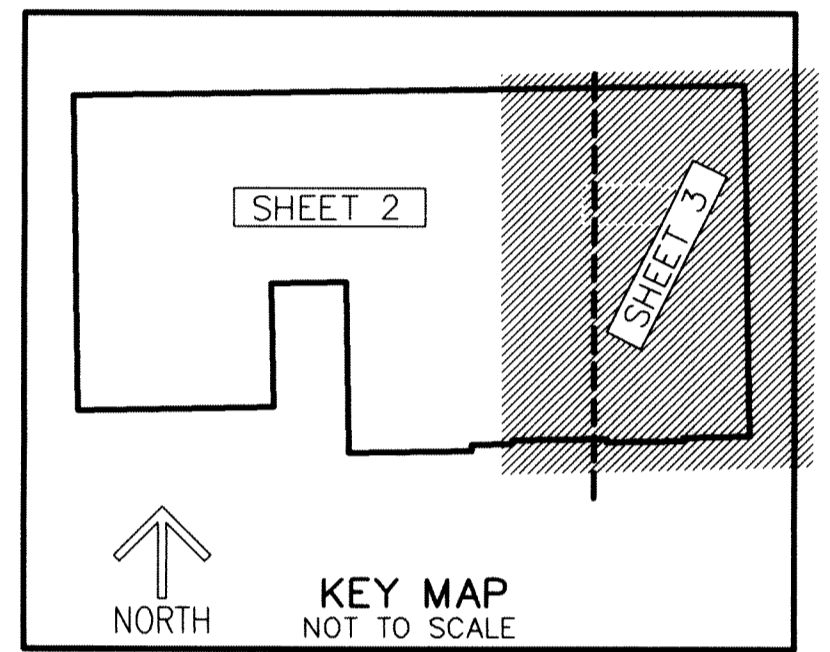
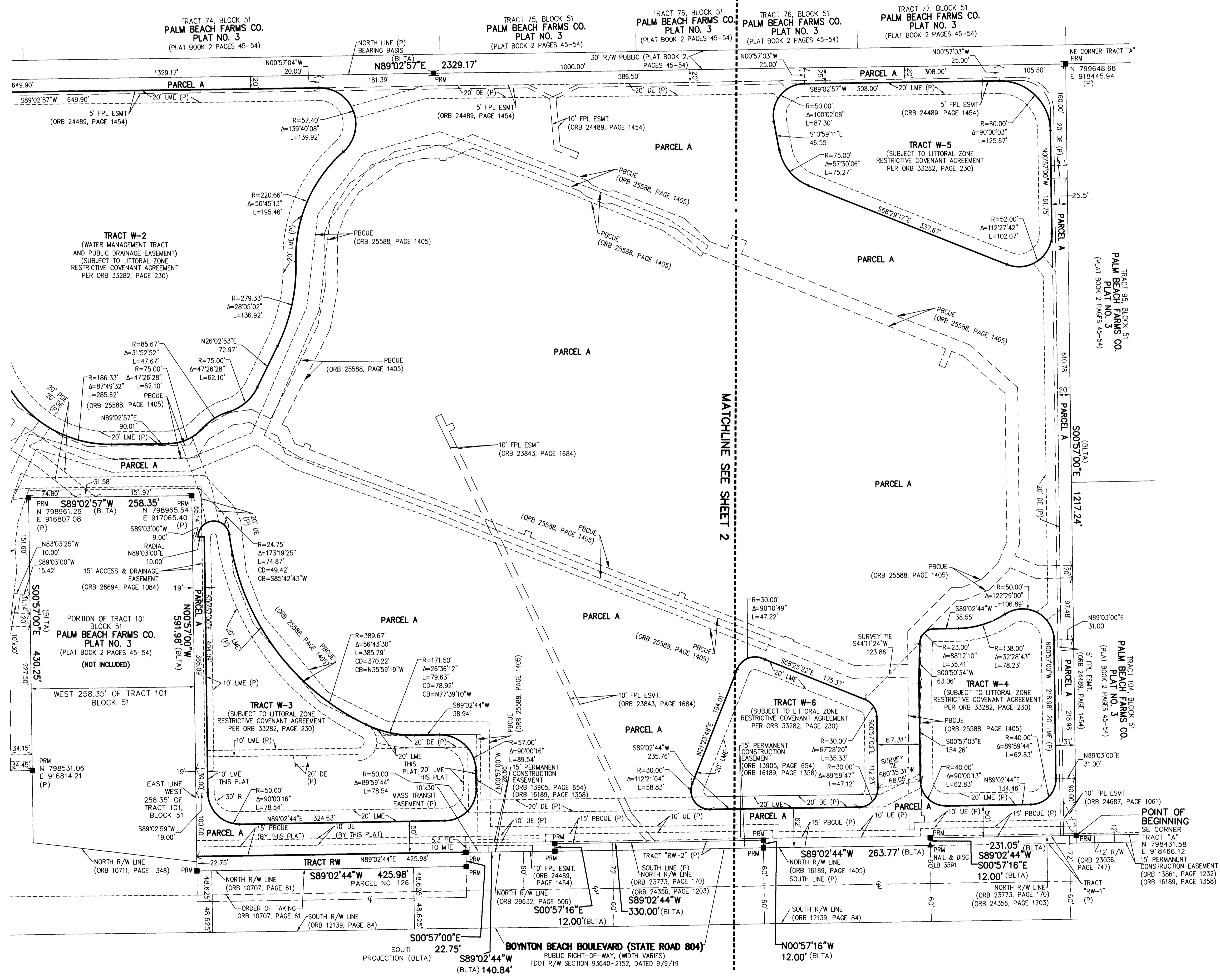
74

SHEET 3 OF 3

THIS INSTRUMENT PREPARED BY
 DAVID P. LINDLEY
 OF
CAULFIELD & WHEELER, INC.
 SURVEYORS - ENGINEERS - PLANNERS
 7900 GLADES ROAD, SUITE 100
 BOCA RATON, FLORIDA 33434 - (561)392-1991

BETHESDA WEST HOSPITAL MUPD REPLAT

BEING A REPLAT OF A PORTION OF BETHESDA WEST HOSPITAL MUPD, ACCORDING TO THE PLAT THEREOF, AS RECORDED IN PLAT BOOK 113 AT PAGE 73 AND A PORTION OF TRACT 101 AND TRACT 102, BLOCK 51, THE PALM BEACH FARMS COMPANY PLAT NO. 3, AS RECORDED IN PLAT BOOK 2, PAGES 45 THROUGH 54 ALL LYING IN SECTION 19, TOWNSHIP 45 SOUTH, RANGE 42 EAST, PALM BEACH COUNTY, FLORIDA



NOTES
COORDINATES, BEARINGS AND DISTANCES
 COORDINATES SHOWN ARE GRID
 DATUM = NAD 83 1990 ADJUSTMENT
 ZONE = FLORIDA EAST
 LINEAR UNIT = US SURVEY FEET
 COORDINATE SYSTEM 1983 STATE PLANE
 TRANSVERSE MERCATOR PROJECTION
 ALL DISTANCES ARE GROUND UNLESS OTHERWISE NOTED
 SCALE FACTOR = 1.000018617
 GROUND DISTANCE X SCALE FACTOR = GRID DISTANCE
 BEARINGS AS SHOWN HEREON ARE GRID DATUM,
 NAD 83 1990 ADJUSTMENT, FLORIDA EAST ZONE.

LEGEND/ ABBREVIATIONS

- CL - CENTERLINE
- Δ - DELTA (CENTRAL ANGLE)
- ARC - ARC LENGTH
- R - RADIUS
- CB - CHORD BEARING
- CD - CHORD DISTANCE
- DE - DRAINAGE EASEMENT
- ESMT - EASEMENT
- FDOT - FLORIDA DEPARTMENT OF TRANSPORTATION
- FND - FOUND
- FPL - FLORIDA POWER & LIGHT COMPANY
- IR - IRON ROD
- LB - LICENSED BUSINESS
- LME - LAKE MAINTENANCE EASEMENT
- LWDD - LAKE WORTH DRAINAGE DISTRICT
- MUPD - MULTI USE PLANNED DEVELOPMENT
- ORB OR ORB - OFFICIAL RECORD BOOK
- PBCUE - PALM BEACH COUNTY UTILITY EASEMENT
- PC - POINT OF CURVATURE
- PCC - POINT OF COMPOUND CURVATURE
- PDE - PUBLIC DRAINAGE EASEMENT
- PRC - POINT OF REVERSE CURVATURE
- PNT - POINT OF NON-TANGENCY
- PT - POINT OF TANGENCY
- R/W - RIGHT-OF-WAY
- N - NORTHING WHEN USED WITH COORDINATES
- E - EASTING WHEN USED WITH COORDINATES
- UE - UTILITY EASEMENT
- PRM - INDICATES SET 4" X 4" X 24" CONCRETE PERMANENT REFERENCE MONUMENT WITH ALUMINUM DISK STAMPED "PRM C&W LB 3591" UNLESS OTHERWISE NOTED
- ▲ - DENOTES SET PERMANENT REFERENCE MONUMENT NAIL AND DISC STAMPED "PRM" LB 3591 UNLESS OTHERWISE NOTED
- △ - DENOTES HORIZONTAL CONTROL POINT
- ✱ - INDICATES SECTION CORNER
- ✱ - INDICATES 1/4 SECTION CORNER
- (P) - BETHESDA WEST HOSPITAL MUPD PLAT BOOK 113, PAGES 73-75
- (P1) - PALM BEACH FARMS COMPANY PLAT NO. 3 PLAT BOOK 2, PAGES 45-54
- (BLTA) - BOUNDARY LINE TRACT "A" BETHESDA WEST HOSPITAL MUPD PLAT BOOK 113, PAGES 73-75